



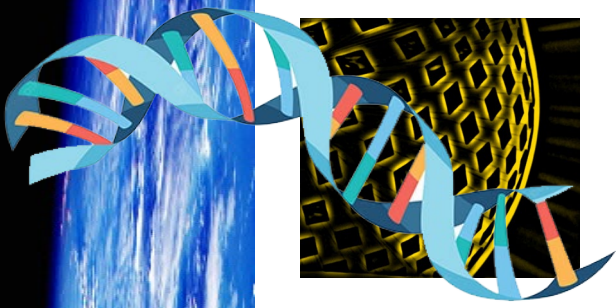
GLOBAL EQUITY ANGELS CORPORATE PROFILE



Capital Acquisition &
World Wide Commodities

www.globalequityangels.com

V4_10_2022



GLOBAL EQUITY ANGELS PTY LTD.

Global Equity Angels Pty Ltd. services global markets, providing a range of high-end professional services for capital acquisition, global investors and commodity buyers and sellers. We have developed a worldwide enterprise that reaches to the far corners of the earth seeking out suppliers for client buyers. As a result, a significant network of suppliers across many countries has been established to service buyers around the world. Governments and independent suppliers also approach Global Equity Angels (GEA) to assist them to find market demand for their products, including mine owners and high-end resource suppliers.

We are a privately owned Australian company that brings commodity buyers and sellers together from around the world for mutual economic gain. Our clients include Governments, Federal agencies and Agri-industry organizations, developers, producers, farmers, and many individual suppliers. In short, Global Equity Angels is a business development and marketing company for Global Trade.

A THOUSAND FACES . . .

Global Equity Angels was born out of the need to provide capital expansion for global enterprise and better international services in the commodity industry. It is a global entity and strong competitor with a large network of commodity suppliers and buyers. GEA is represented internationally and has export partners around the globe to facilitate fulfillment of supply.

A business represented by over a thousand faces!

Today GEA doubles its growth each year. We expect this growth to continue in the future as many of our commodities are in high demand. Food supplies to China, India and the Asian sector offer amazing growth potential for GEA. And our resource commodity business in energy technologies, industrial resources and precious metals and minerals is expected to remain strong even in tough economic conditions. In 2022 we ventured into Robotics and AI.



Global Equity Angels markets resource commodities

GEA is well known for high end resources, coal, iron ore, gas, copper, cobalt, Lithium and other precious metals. We continue to expand our range of resource commodities each year through domestic and international agreements.

Global Equity Angels delivers to the world

The team at GEA has professional worldwide experience in a wide range of commodities and is happy to work with SUPPLIERS and BUYERS, trading companies, distributors, importers, exporters and end user clients to achieve mutual reward and success. Some of the commodities we supply are chicken products, Australian beef, lamb and other meats, wines and spirits, Australian spring water, infant milk formula, frozen foods, grains, manuka honey, nuts, rice, sunflower oil, soy beans (oil), and much more. GEA has deals with farmers, abattoirs, fishing fleets, cattle ranches, market gardeners, exporters, agri-business developers, industrial resource mines, locally and internationally.

TIME IS MONEY . . .



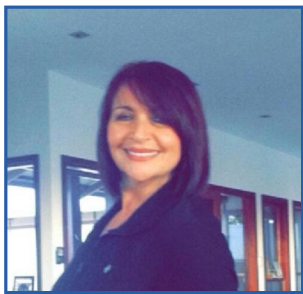
Sometimes the ability to respond quickly to client demands means the difference between client profit and loss. And sometimes markets demand urgency. The GEA network is geared to service, that provides fast fulfillment at competitive prices when international negotiations are required. Competitive quotes and payment terms are always at the forefront of our business model. Our international trade consulting, fee for service, business is a growing sector for GEA.

Global Equity Angels raises capital for global projects

GEA also markets to investors from around the world, high yield capital investment projects. These include projects in Australia. Generally, these are large scale projects requiring substantial funding and experience with high-end banking instruments, inground asset funding, and instrument trades. We have worked with politicians and international investors in this field. GEA also markets resorts, property developments and agricultural producers to international investors.

Greatness springs from here . . .

The key to our growth is our experienced team focused on high KPI performance and our business DNA. Our approach is 'value for money' services and 'best price options' for commodity buyers. In many of the markets we deal in, we operate by word of mouth. This has augured well for our continued success in maximizing client business. Our team delivers your dream!



CHIEF-ANGEL: ANTOINETTE VERSACE - Chief Executive Officer

Antoinette has extensive experience and knowledge in global banking, business development, marketing, investment management and capital acquisition. Antoinette is a dedicated and accomplished professional with over 25 years of executive management within the corporate arena in Australia, New Zealand, Asia, and USA. Antoinette has a forte in managing large multi- disciplinary teams to deliver local and international projects, combined with strategic planning abilities to ensure the delivery of key results and excellence to the client.

ARC-ANGEL: BARRY HOLLINGSWORTH - Creative Strategist and General Manager

Barry has over 40 years in the technology industry with global management experience in Asia, Europe, and the Americas. He specializes in marketing with a focus on strategic partnerships and global distribution. Barry manages strategic relationships and is an accomplished professional. He has many years of extensive expertise in the world of Innovative Technologies, industrial processes, technical services, banking instruments and planning initiatives. At GEA Barry fuels business development and is sanctioned to drive market expansion on both domestic and global fronts.



At GEA our role is to ensure that everything we do is in line with our business' DNA and that as we grow and scale, we ensure that the 'non-negotiables' on which the company was founded are adhered to. It's not easy, particularly as over the last few years we have grown quickly, but it is one of the most important parts of the job – to ensure we remain true to ourselves and to why we exist.

Mission: Our mission is to be a global leader building a unique portfolio of related brands, striving to surpass our competitors in quality, innovation and value, and elevating our image to become the company most clients turn to worldwide and elevating the image of our industry. We are known for our leadership edge, through our passion for high standards, our respect for diversity and our commitment to create exceptional opportunities for professional growth so that our associates can fulfill their highest potential. We strive to be your preferred solution and trusted partner with an attentive personal touch delivering competently with service excellence and striving to be the acknowledged international leader, preferred partner and to succeed in the world's ever-changing markets. Global Equity Angels is recognized as an ethical company that is observed and emulated as a model of success.



OUR TEAM DELIVERS YOUR DREAM . . .

Global Equity Angels: The DNA of Business Success & Mutual Reward Precious Metals and Minerals

- GOLD BULLION
- DORE
- DIAMONDS cut and rough
- LITHIUM
- MINES
- REFINERIES
- RARE EARTH



Our corporate hands reach the four corners of the world. Having the right DNA, that is fully embedded, is key to retaining talent. Our employees become our biggest advocates – their passion and enthusiasm for the business will become infectious and through that you will find ways to attract the top talent. In the same way that great products sell themselves, great people with a passion for the business will attract potential positive outcomes.

Global Equity Angels also acts as an authorized mandate for buyers and sellers. We have the right DNA!

(EG.) GEA markets Gold Dore, Bullion and Fine Gems and Stones worldwide on behalf of Global Diamond Traders, based in Dubai (UAE), with offices and representation in Namibia, South Africa, Australia and Hong Kong. Global Diamond Traders are licensed Dore and Diamond Suppliers/ Dealers, have their own Exploration Prospecting Licenses (EPL) and export licenses and mining concession in several South African States, for Dore, and combined with GEA, deal with clients in the Middle East, India, Europe, USA, Asia, China, Australia, and UK. All certifications, and licenses are in place. FOB or CIF available.

Quality Professional Service, World Class solutions, and Innovative Thinking sets GEA apart!

Since 2014 HIGH-END RESOURCES, MINERALS, PROPERTY DEVELOPMENT,
Since 2021 ROBOTICS, HIGH-TECH AI MARKETING & SOFTWARE